

# ZERO CHANCE

As recorded by Soundgarden

(From the 1996 Album DOWN ON THE UPSIDE)

## A Intro

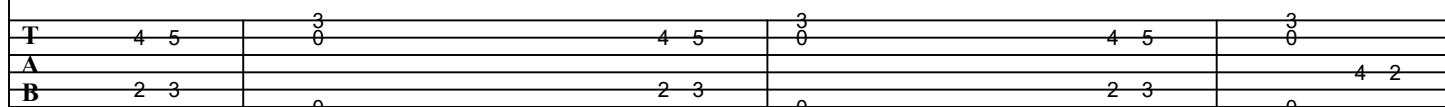
Slow Rock ♩ = 72  
B C Em

B C Em

B C Em D C

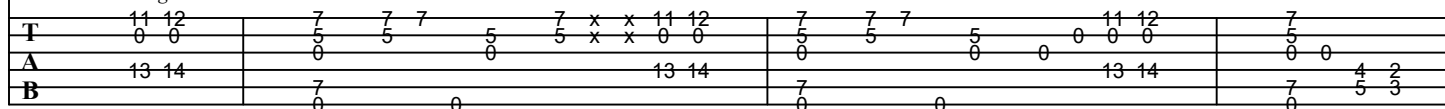


Gtr I



Gtr II

let ring

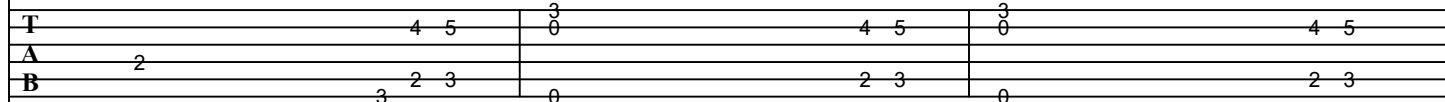


Cmaj7

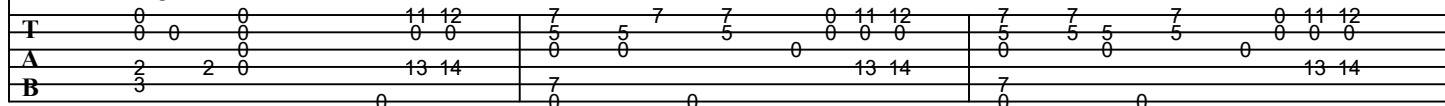
B C Em

B C Em

B C



let ring



Em D C G Em/G N.C.

8

let ring

3x

sl. H P H P P

**[B] Pre-Verse**

11

Gtrs I, II

sl.

**[C] Verse**

G G9/F

13

let ring

let ring

G G9/F

sl.

**D** Chorus

Csus2/G D5/A Csus2/G D5/A

21

T A B

25

T A B

sl.

sl.

Csus2/G D5/A Csus2/G B C

11 12  
0 13 14

**E** Interlude

Em B C Em B C Em D C G

28

T A B

31

T A B

sl.

H P H P P

sl.

D5/A Csus2/G

33

T A B

sl.

**F Verse****G Bridge**

The musical score for Example 6-10 consists of two systems. The first system features a treble clef staff with a key signature of one sharp (F#) and a common time signature (C). It contains three measures of music, each starting with a C chord and ending with a B5 chord. The second system shows guitar tablature for the same piece, with fret numbers indicated by circles on the strings. A dashed line labeled "let ring" spans across the measures. The tablature includes fingerings such as 8, 7, 0, and 9.

Em7/G G G13/F

46

let ring

T

A

B

sl.

[illegible]

**H** Out-Chorus

51

Csus2/G D5/A Csus2/G D5/A

55

C B5 C B5

58

C B5 Em7/G G

rit. G13/F

Slower ♩ = 57

Csus2/G

let ring

sl.